

It's not a house but it used to be. It's not a ruin yet.

*

We met Soshi Matsunobe in Kyoto more than ten years ago. We were impressed by his dedication to precise and yet almost invisible sculptures, things that disappear, objects hesitating between a drawing and a model.

*

It's March 2024. Soshi is in Paris and asks us to display some works at the "trash house". Beginnings are simple.

*

We met Denise Scott-Brown in Philadelphia in 2008. Robert Venturi was still alive and we were embarrassed with postmodern heritage. We went and met them, hoping for some clarity, and left with a yellow plastic duck, signed Bob & Denise.

*

A few years later, we called Denise to share a common interest in field survey in architecture. We had a long discussion about what she called "life before architecture" and she agreed to loan a few pictures of her early surveys, taken during the 1960s, for our exhibition at arc en rêve in Bordeaux, France.

*

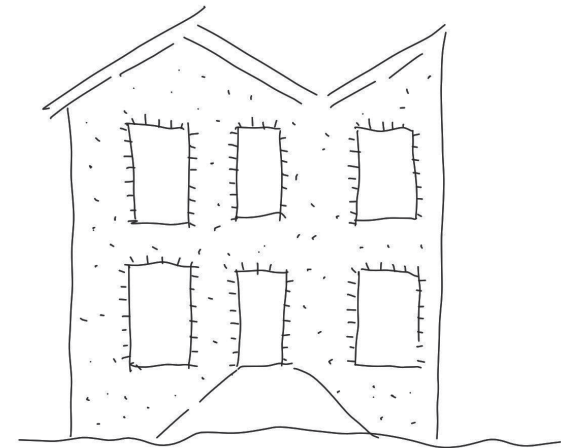
We came across Lois Weinberger's work at gallery Salle Principale, through the words of Maryline Brustolin. She talked about his work as a succession of restless adventures. He was an artist, and a gardener. We were seeking an architecture which was as mundane and imprevisible as gardening.

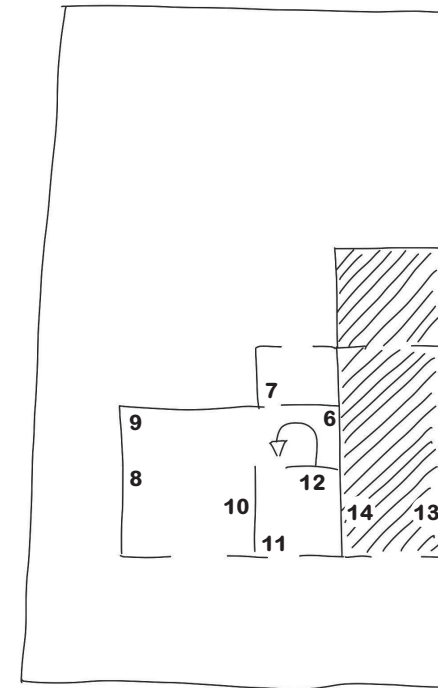
*

We met Nicolas Boulben one day at the office. He was applying for a job, he was not an architect. We have been working together for three years now. We discovered he was a painter, using leftovers from construction sites as a medium for plain landscapes.

*

Elvire Bonduelle and Claire Lavabre are less regular companions, but their work appears from time to time in our discussion as landmarks for a domestic landscape. For an industrial designer, Claire Lavabre's objects are not formal; they result from the conscious staging of found objects. Elvire's drawings, made with a ruler, reflect the feverish enthusiasm of owning. In this very case: a house, a car, and a dog.





- 1 - Soshi Matsunobe, My Stones, 2024
- 2 - Soshi Matsunobe, Direction of Materials, 2024
- 3 - Denise Scott-Brown, Studies in transparency honoring Arthur Korn, author of Glas im Bau (1929) and studio critic at the Architectural Association, London, 1965
- 4 - Nicolas Boulben, Peintures, 2023
- 5 - Soshi Matsunobe, Ghost of Copy (Gray), 2023

- 6 - Elvire Bonduelle, Maison Voiture Chien, 2015
- 7 - Claire Lavabre, Monte Testaccio, 2018
- 8 - Soshi Matsunobe, Knot (Wall drawing), 2024
- 9 - Soshi Matsunobe, Nissed, 2022
- 10 - Soshi Matsunobe, Knit the Knot, 2016
- 11 - Lois Weinberger, Garden, 1997, courtesy Salle Principale
- 12 - Soshi Matsunobe, Pattern of Dark (Original), 2018
- 13 - Soshi Matsunobe, Pattern of Dark, 2024
- 14 - MBL, maison bureau, 2023-2024.